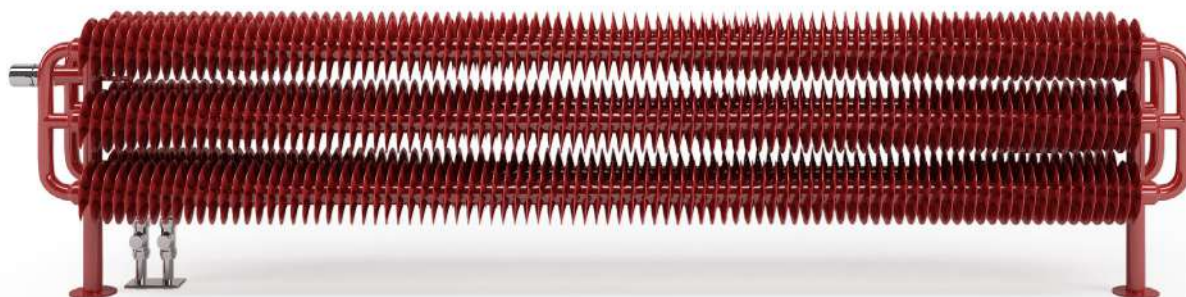


# Ribbon HSD

---



COLORE  
A SCELTA



Ral : 3031

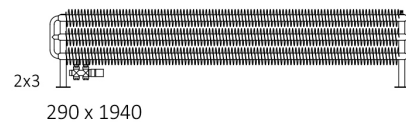
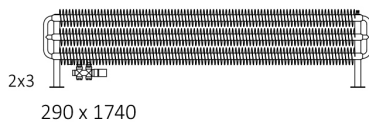
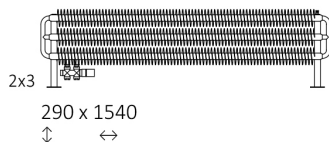
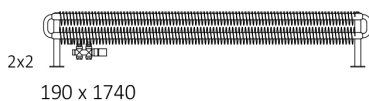
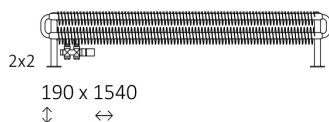
# Ribbon HSD

## Predisposizioni

Ad acqua calda





## Dimensioni disponibili



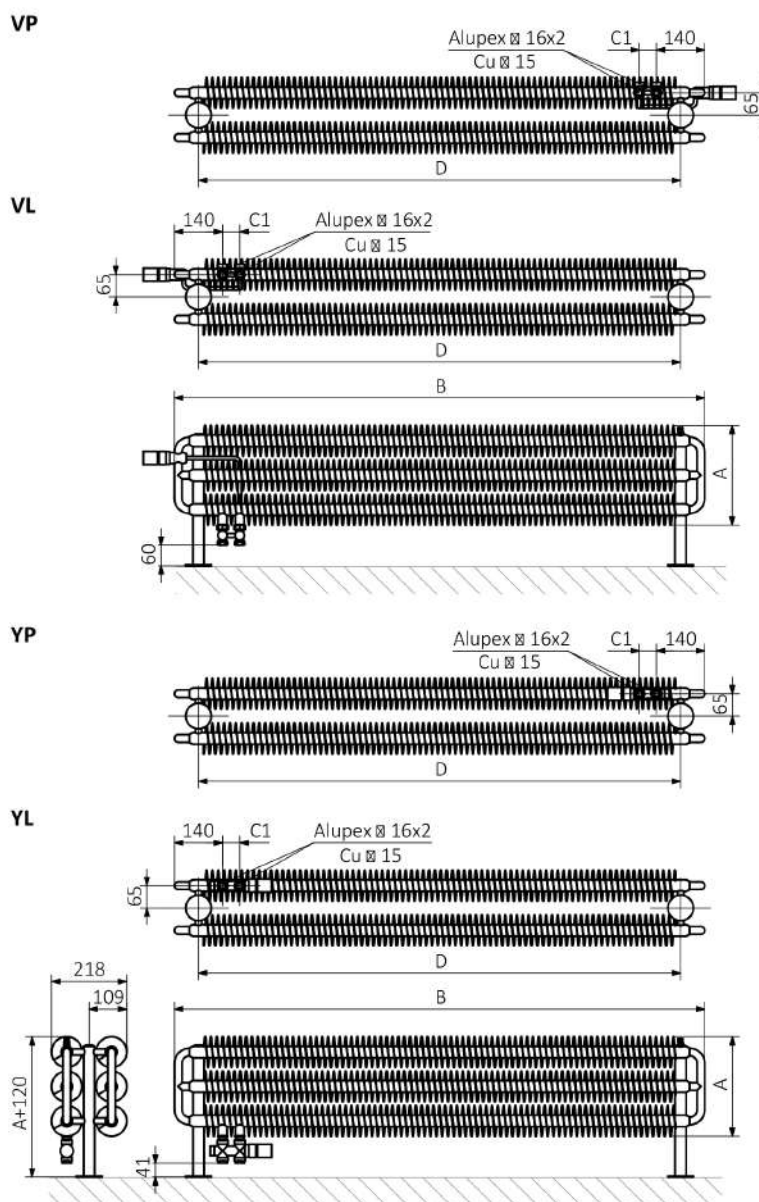
# Ribbon HSD

## Informazioni tecniche :

Pressione del lavoro : 1.0 MPa    Temperatura massima di lavoro : 95°C

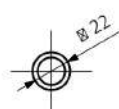
A ↕	B ↔	C1 [mm]	75/65/20°C [W]	55/45/20°C [W]	D [mm]	 [dm³]	 [kg]
190	1540	50	1207	683	1400	3,78	29,99
190	1740	50	1364	772	1600	4,26	33,97
190	1940	50	1420	803	1800	4,75	37,95
290	1540	50	1609	909	1400	5,52	44,20
290	1740	50	1818	1028	1600	6,25	50,17
290	1940	50	2027	1146	1800	6,99	56,15

# Ribbon HSD



A - Altezza / B - Larghezza / C1-C5 - Distanza tra i raccordi / D - Interasse tra i tubi verticali / E - Distanza tra i punti di fissaggio / F - Distanza dell'asse del punto di fissaggio inferiore al bordo inferiore dello scaldasalviette

Collettore :



Profilo :

