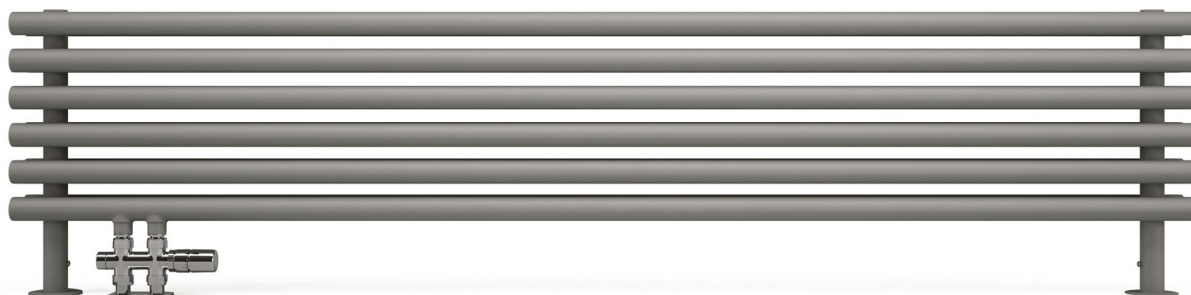


Tune HSD



Colore : Nikel Matt

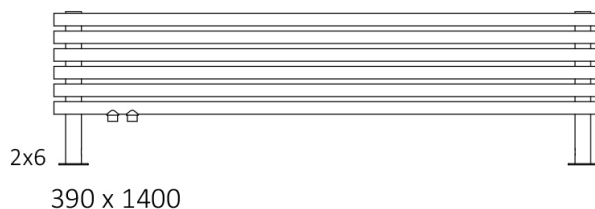
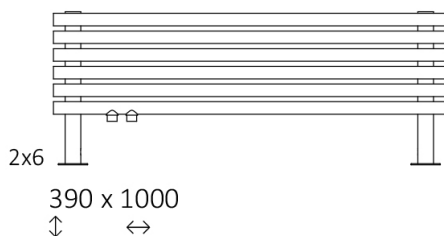
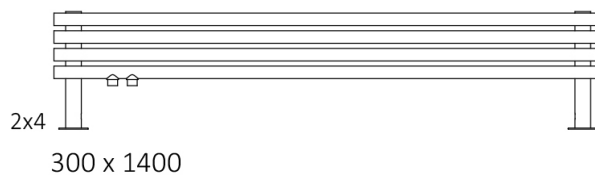
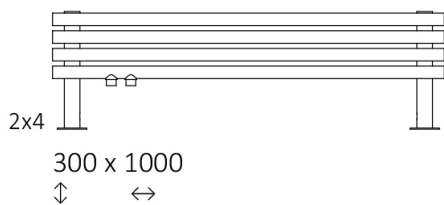
Tune HSD

Predisposizioni

Ad acqua calda





Dimensioni disponibili



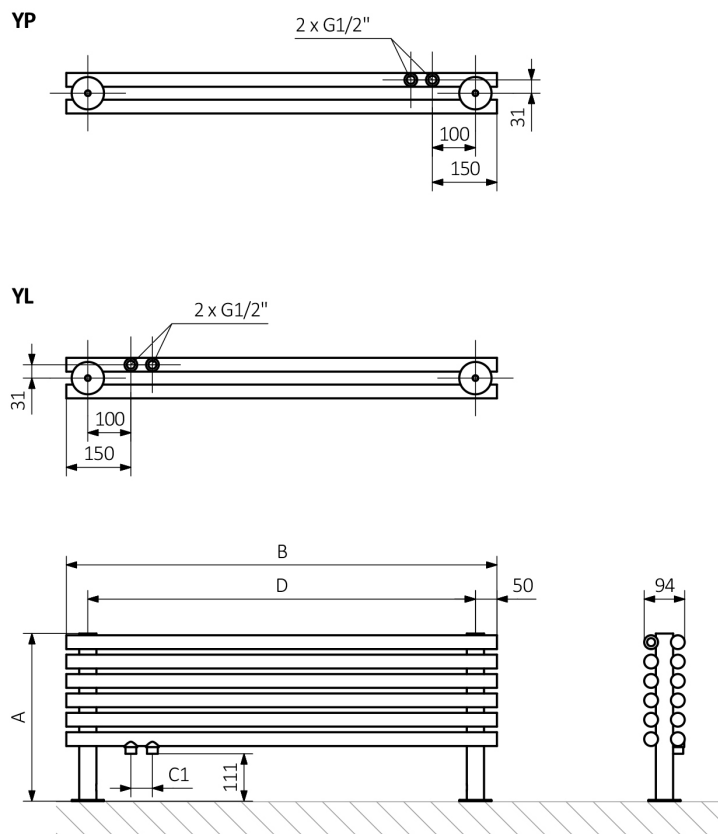
Tune HSD

Informazioni tecniche :

Pressione del lavoro : 1.0 MPa Temperatura massima di lavoro : 95°C

A ↓	B ↔	C1 [mm]	75 65 20°C [W]	55 45 20°C [W]	D [mm]	 [dm³]	 [kg]
300	1000	50	421	229	900	6,11	8,94
300	1400	50	589	320	1300	8,32	11,85
390	1000	50	564	305	900	9,05	13,05
390	1400	50	790	428	1300	12,35	17,42

Tune HSD



A - Altezza / B - Larghezza / C1-C5 - Distanza tra i raccordi / D - Interasse tra i tubi verticali / E - Distanza tra i punti di fissaggio / F - Distanza dell'asse del punto di fissaggio inferiore al bordo inferiore dello scaldasalviette

Collettore :

Profilo :

