

Bone



Colore: Noble Brown

Bone

Predisposizioni

Ad acqua calda



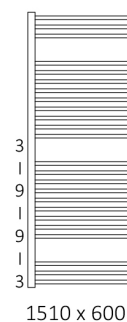
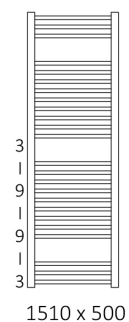
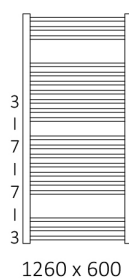
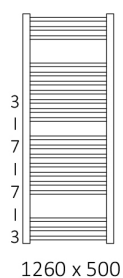
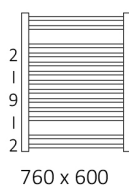
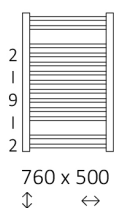
Elettrico



Misto






Dimensioni disponibili



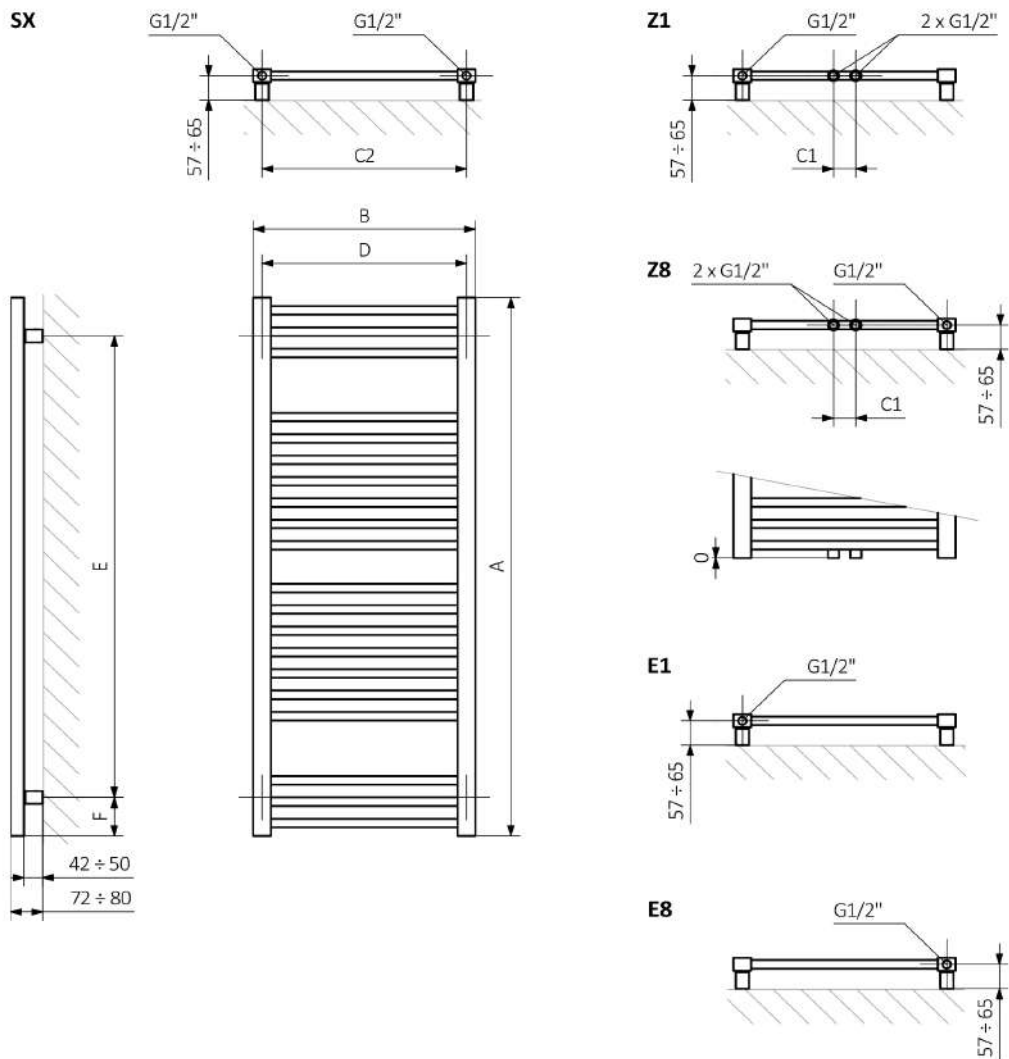
Bone

Informazioni tecniche :

Pressione del lavoro : 1.0 MPa Temperatura massima di lavoro : 95°C

A ↕	B ↔	C1 [mm]	C2 [mm]	75 65 20°C [W]	55 45 20°C [W]	 [W]	D [mm]	E [mm]	F [mm]	 [dm ³]	 [kg]
Vernice possidica											
760	500	50	460	320	173	300	460	580	90	3,09	7,09
760	600	50	560	384	208	400	560	580	90	3,46	8,19
1260	500	50	460	503	271	600	460	1080	90	4,93	11,06
1260	600	50	560	603	325	600	560	1080	90	5,51	12,75
1510	500	50	460	607	323	600	460	1330	90	5,92	13,22
1510	600	50	560	728	387	800	560	1330	90	6,61	15,24
Rivestimento galvanico											
760	500	50	460	224	121	200	460	580	90	3,09	7,09
760	600	50	560	269	145	300	560	580	90	3,46	8,19
1260	500	50	460	352	190	400	460	1080	90	4,93	11,06
1260	600	50	560	422	227	400	560	1080	90	5,51	12,75
1510	500	50	460	425	226	400	460	1330	90	5,92	13,22
1510	600	50	560	510	271	600	560	1330	90	6,61	15,24

Bone



A - Altezza / B - Larghezza / C1-C5 - Distanza tra i raccordi / D - Interasse tra i tubi verticali / E - Distanza tra i punti di fissaggio / F - Distanza dell'asse del punto di fissaggio inferiore al bordo inferiore dello scaldasalviette

Tubo :

