

# Aero

---



# Aero

---

## Raccordements

---

Chauffage central

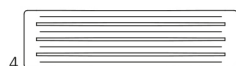


## Dimensions disponibles

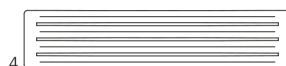
---



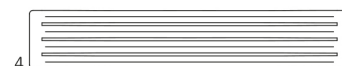
325 x 900  
↓ ↔



325 x 1200



325 x 1500



325 x 1800



410 x 1200  
↓ ↔



410 x 1500



410 x 1800

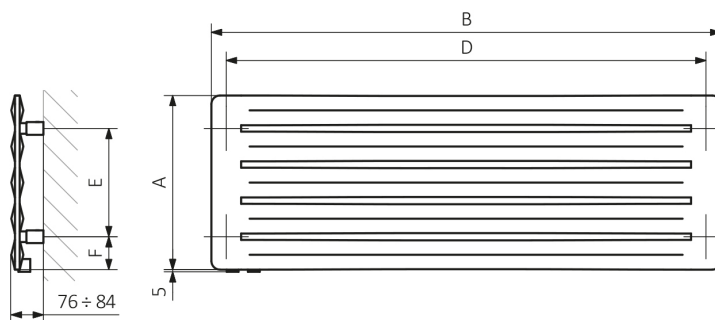
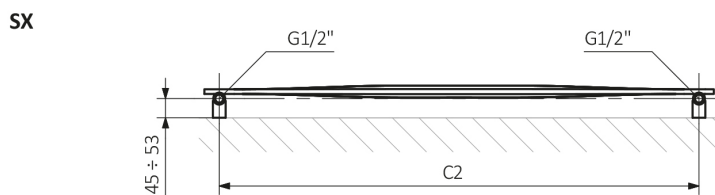
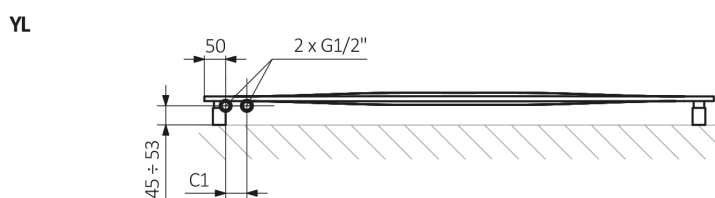
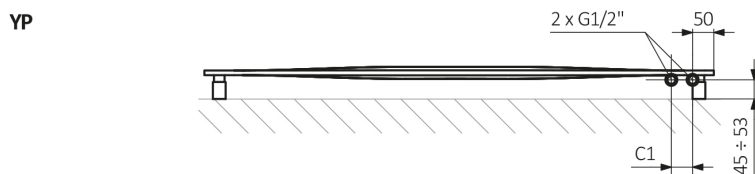
# Aero

## Données techniques

Pression du travail : 700 kPa    Température maximale de travail : 95°C

A ↕ [mm]	B ⇔ [mm]	C1 [mm]	C2 [mm]	75/65/20°C [W]	55/45/20°C [W]	D [mm]	E [mm]	F [mm]	📦 [dm³]	📦 [kg]
325	900	50	830	290	160	830	170	77,5	3,25	8,97
325	1200	50	1130	388	214	1130	170	77,5	4,57	11,88
325	1500	50	1430	485	267	1430	170	77,5	5,90	14,79
325	1800	50	1730	582	320	1730	170	77,5	7,22	17,70
410	1200	50	1130	480	265	1130	255	77,5	5,72	14,87
410	1500	50	1430	600	330	1430	255	77,5	7,37	18,51
410	1800	50	1730	720	396	1730	255	77,5	9,03	22,15

# Aero



A – hauteur B – largeur C1-C5 – écartement des raccords D – écartement des consoles en horizontal  
E – écartement des consoles en vertical F – distance de l'axe de la console inférieure au bord inférieur du collecteur

**Tube :**

