

Pajak



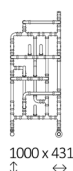
Pajak

Raccordements

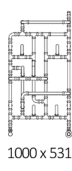
Chauffage central



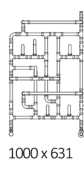
Dimensions disponibles



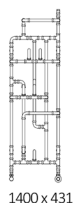
1000 x 431



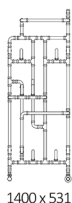
1000 x 531



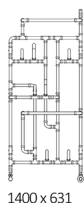
1000 x 631



1400 x 431



1400 x 531






1400 x 631

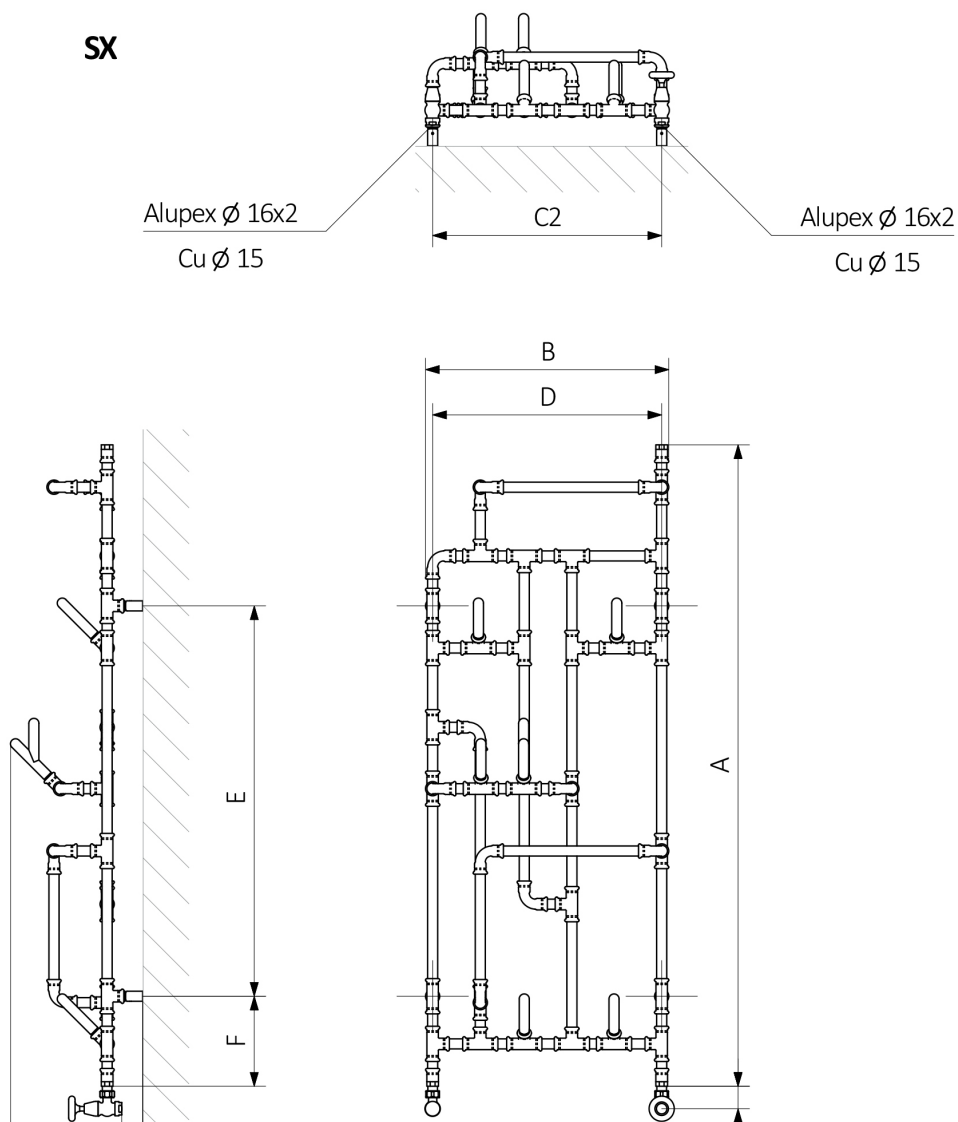
Pajak

Données techniques

Pression du travail: 1,0 MPa Température maximale de travail: 95°C

A ↑↓	B ↔	C2 [mm]	75/65/20°C [W]	55/45/20°C [W]	 [W]	D [mm]	E [mm]	F [mm]	 [dm³]	 [kg]
1000	431	400	300	165	300	400	505	196,5	2,13	9,0
1000	531	500	339	184	400	500	505	196,5	2,20	9,3
1000	631	600	380	205	400	600	505	196,5	2,46	10,1
1400	431	400	368	199	400	400	852	196,5	2,70	10,0
1400	531	500	424	227	400	500	852	196,5	2,77	10,4
1400	631	600	480	256	600	600	852	196,5	3,02	11,1
1800	431	400	437	234	400	400	1162	196,5	3,26	11,1
1800	531	500	510	272	600	500	1162	196,5	3,32	11,5
1800	631	600	582	310	600	600	1162	196,5	3,58	12,2

Pajak



A – hauteur B – largeur C1-C5 – écartement des raccords D – écartement des consoles en horizontal E – écartement des consoles en vertical F – distance de l'axe de la console inférieure au bord inférieur du collecteur

Profil:

