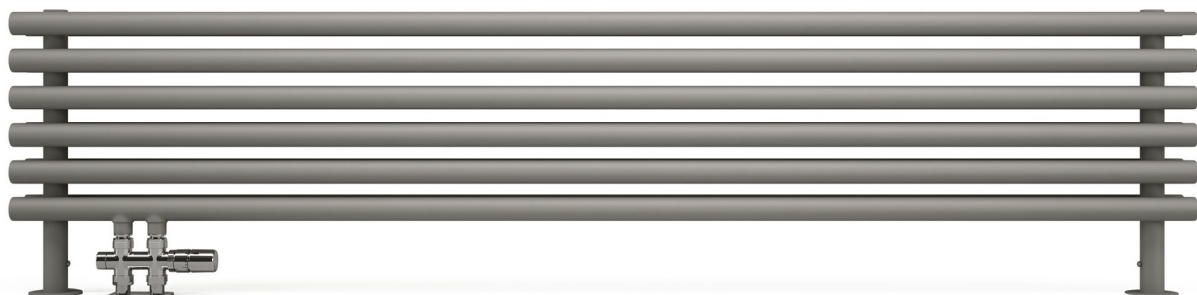


# Tune HSD

---



COLORE  
A SCELTA



Couleur : Nikel Matt

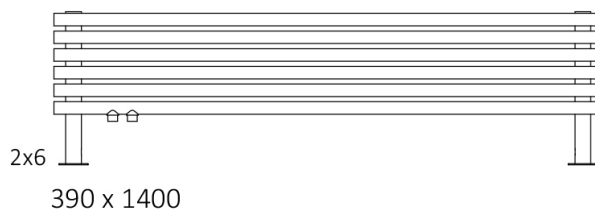
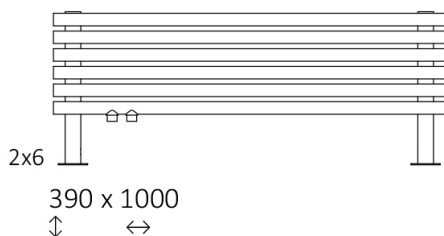
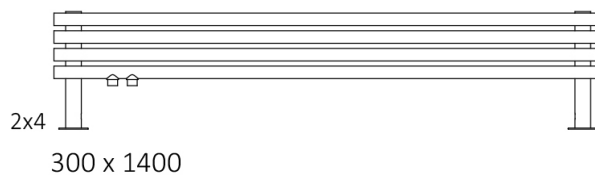
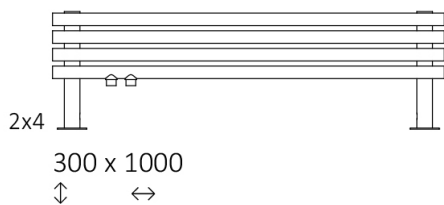
# Tune HSD

## Raccordements

Chauffage central



## Dimensions disponibles





# Tune HSD

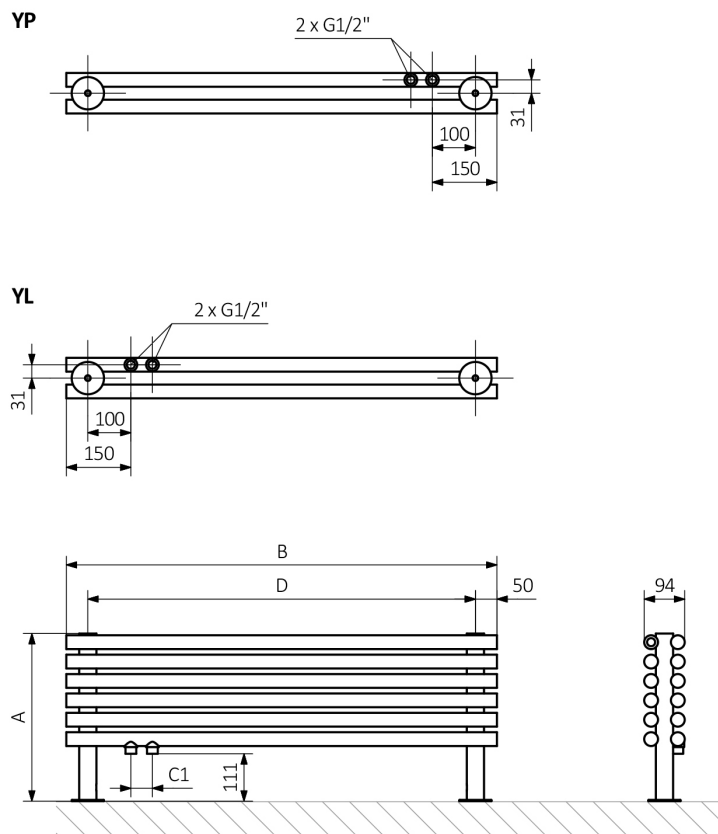
## Données techniques

Pression de travail : 1.0 MPa

Temperature maximale de travail : 95°C

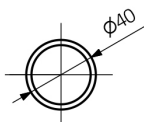
A ↓	B ↔	C1 [mm]	75 65 20°C [W]	55 45 20°C [W]	D [mm]	 [dm³]	 [kg]
300	1000	50	421	229	900	6,11	8,94
300	1400	50	589	320	1300	8,32	11,85
390	1000	50	564	305	900	9,05	13,05
390	1400	50	790	428	1300	12,35	17,42

# Tune HSD



A - Hauteur / B - Largeur / C1-C5 - Ecartement des raccords / D - Ecartement des consoles en horizontal / E - Ecartement des consoles en vertical / F - Distance de l'axe de la console inférieure au bord inférieur du collecteur

**Collecteur :**



**Profil :**

