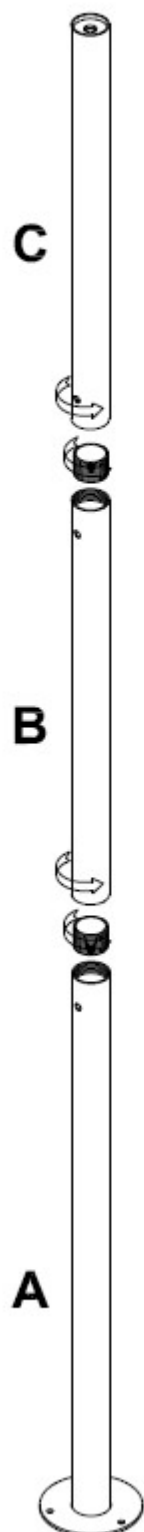


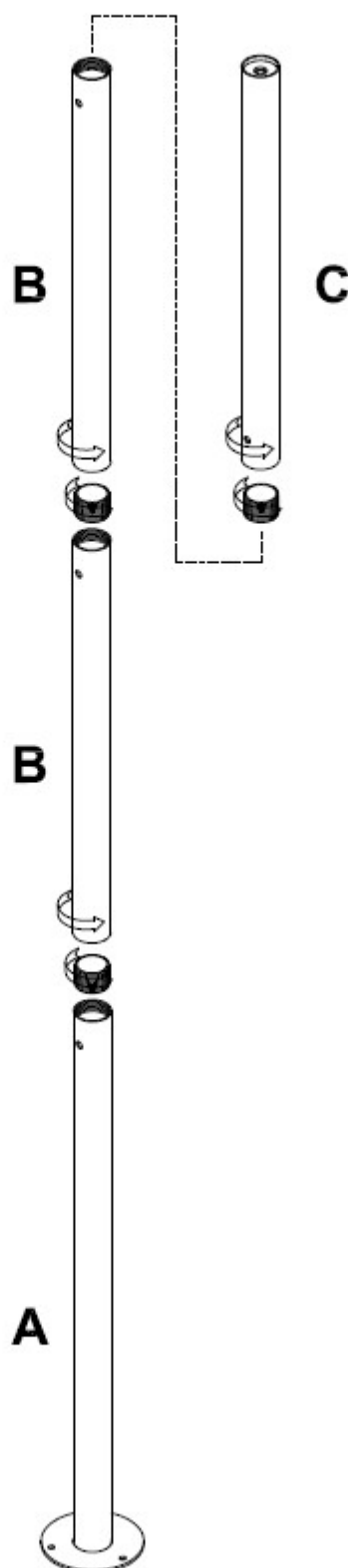


MONTAGE DES INNENMASTES

226 < HT < 321



HT > 321

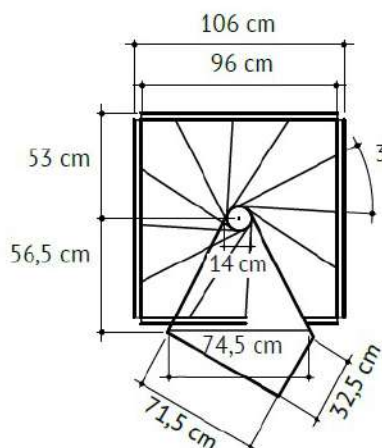


HT < 226

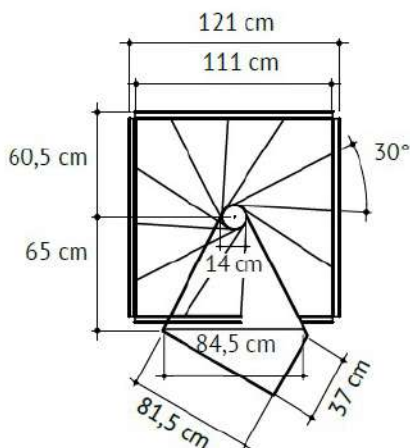


FORMEN UND ABMESSUNGEN DER TREPPE

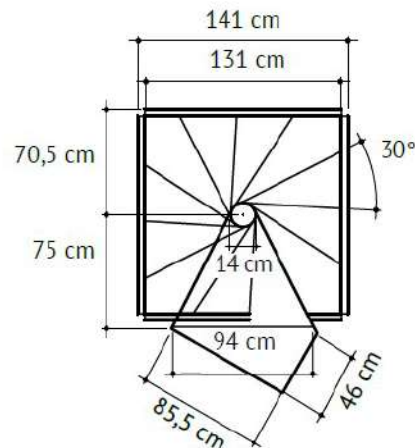
Durchmesser **105 cm**



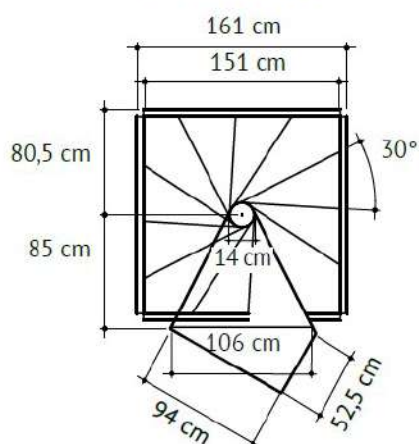
Durchmesser **120 cm**



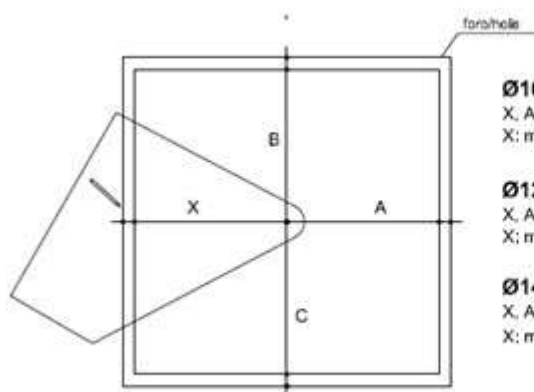
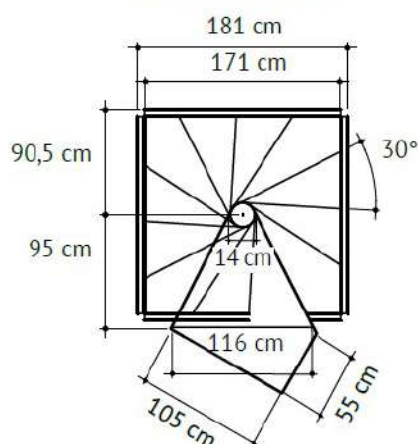
Durchmesser **140 cm**



Durchmesser **160 cm**



Durchmesser **180 cm**



Ø105

X, A, B, C: min 55 cm
X: max 56,5 cm

Ø120

X, A, B, C: min 62,5 cm
X: max 65 cm

Ø140

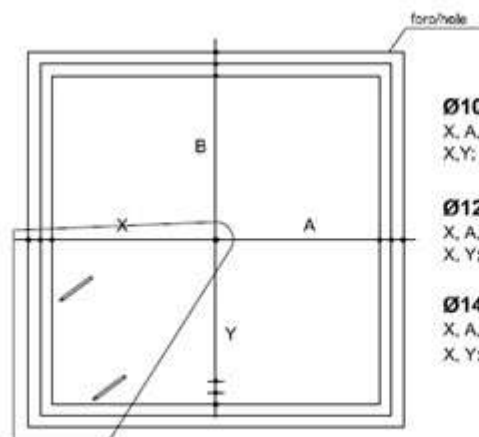
X, A, B, C: min 72,5 cm
X: max 75 cm

Ø160

X, A, B, C: min 82,5 cm
X: max 85 cm

Ø180

X, A, B, C: min 92,5 cm
X: max 95 cm



Ø105

X, A, B, C: min 55 cm
X, Y: max 62,5 cm

Ø120

X, A, B, C: min 62,5 cm
X, Y: max 72,5 cm

Ø140

X, A, B, C: min 72,5 cm
X, Y: max 82,5 cm

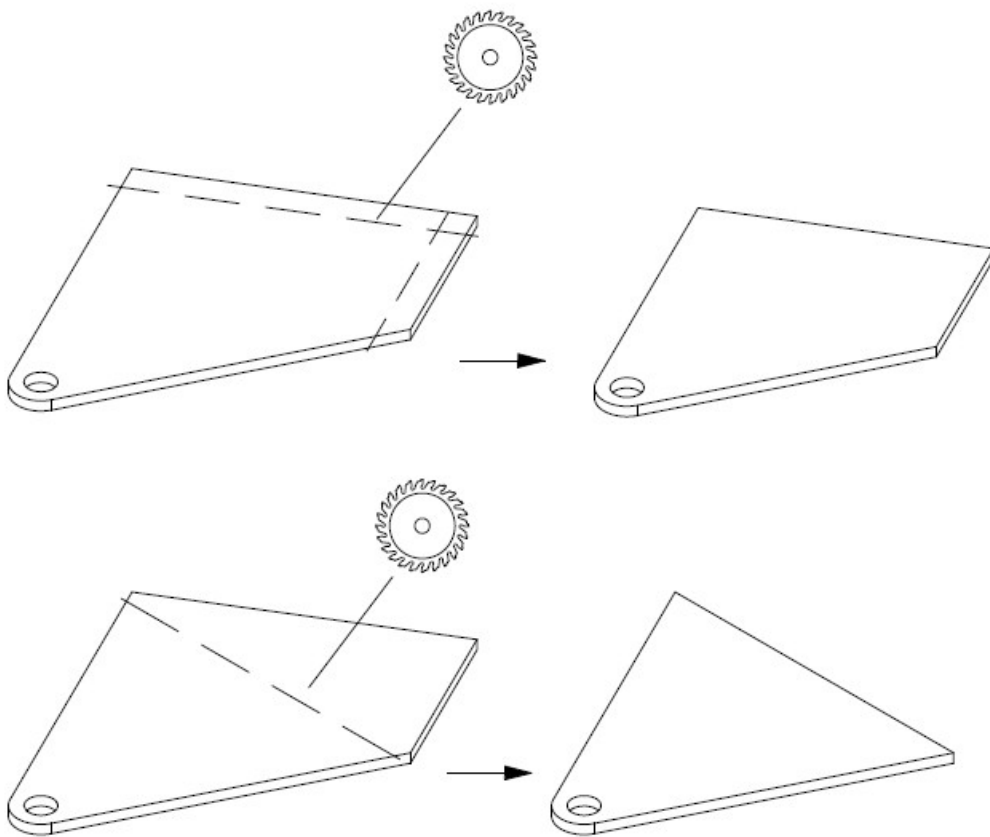
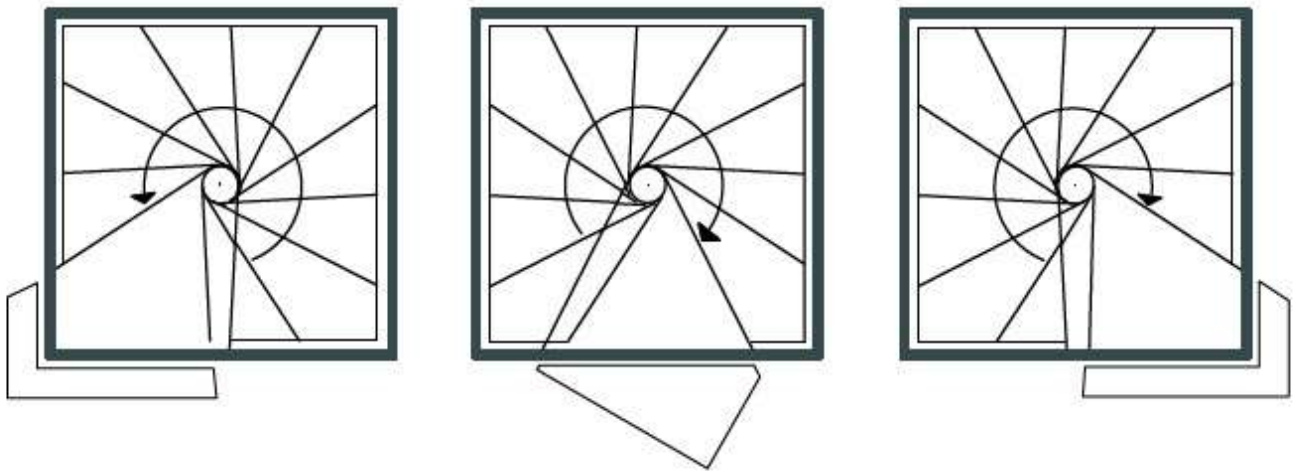
Ø160

X, A, B, C: min 82,5 cm
X, Y: max 92,5 cm

Ø180

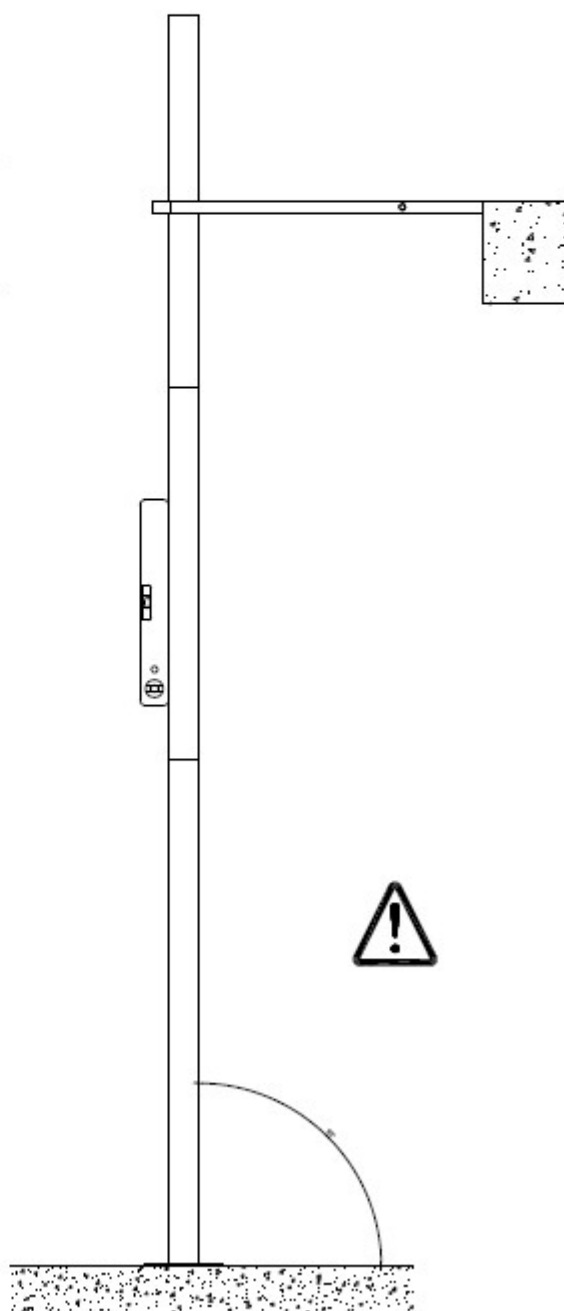
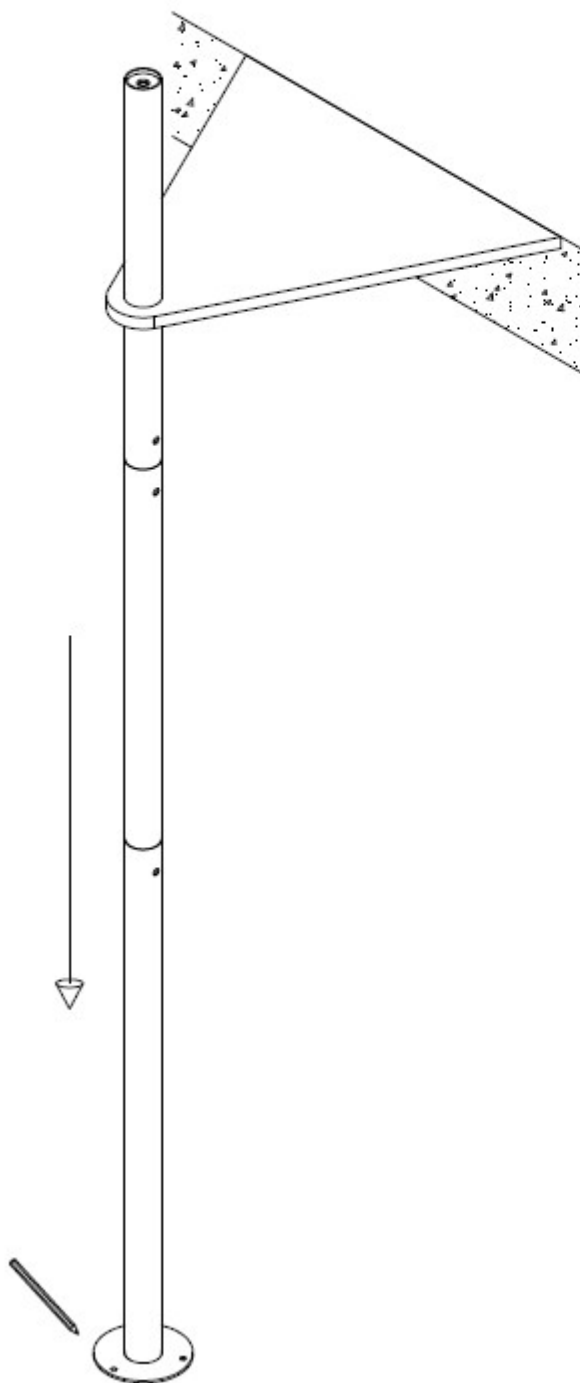
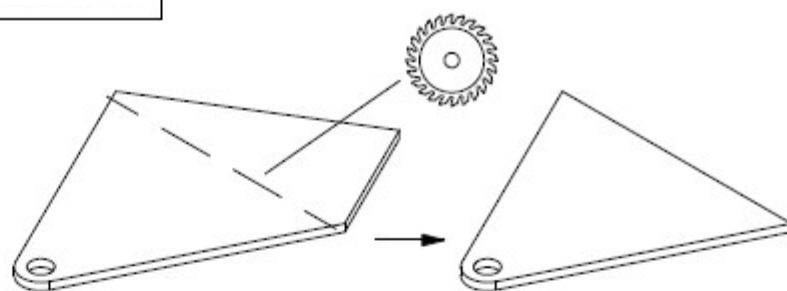
X, A, B, C: min 92,5 cm
X, Y: max 100 cm

Quadratischer Trichter

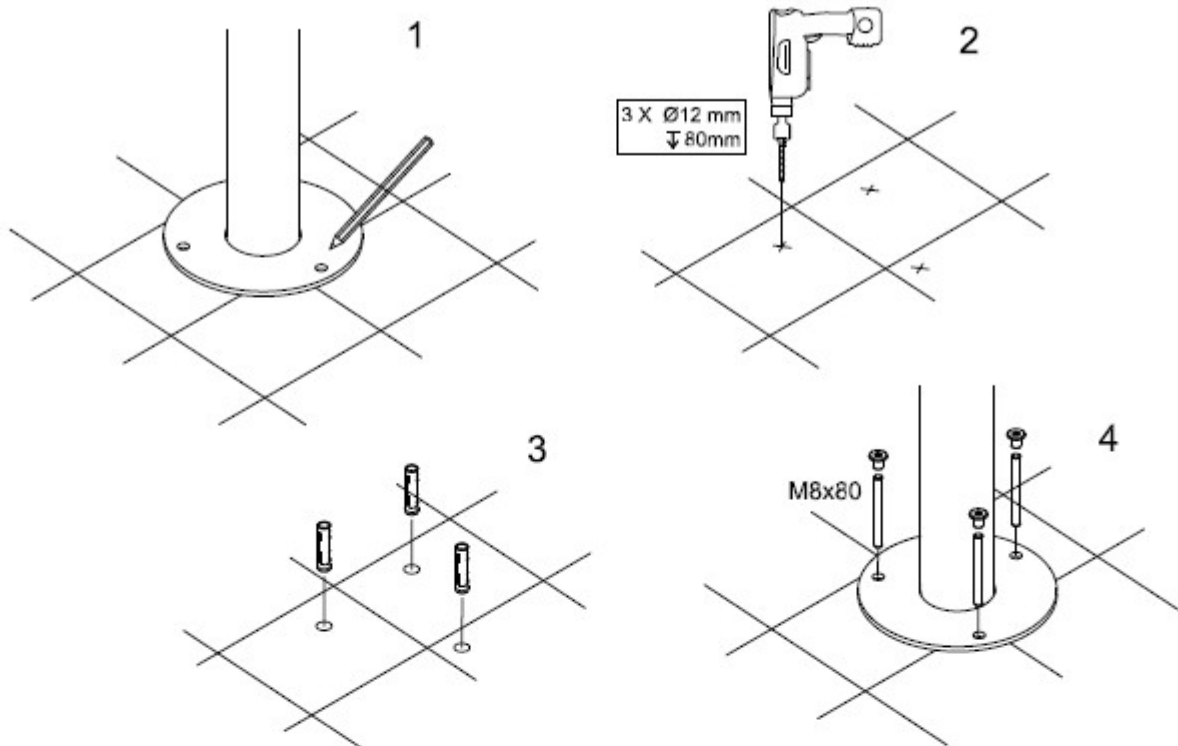




Dreieckige Landung

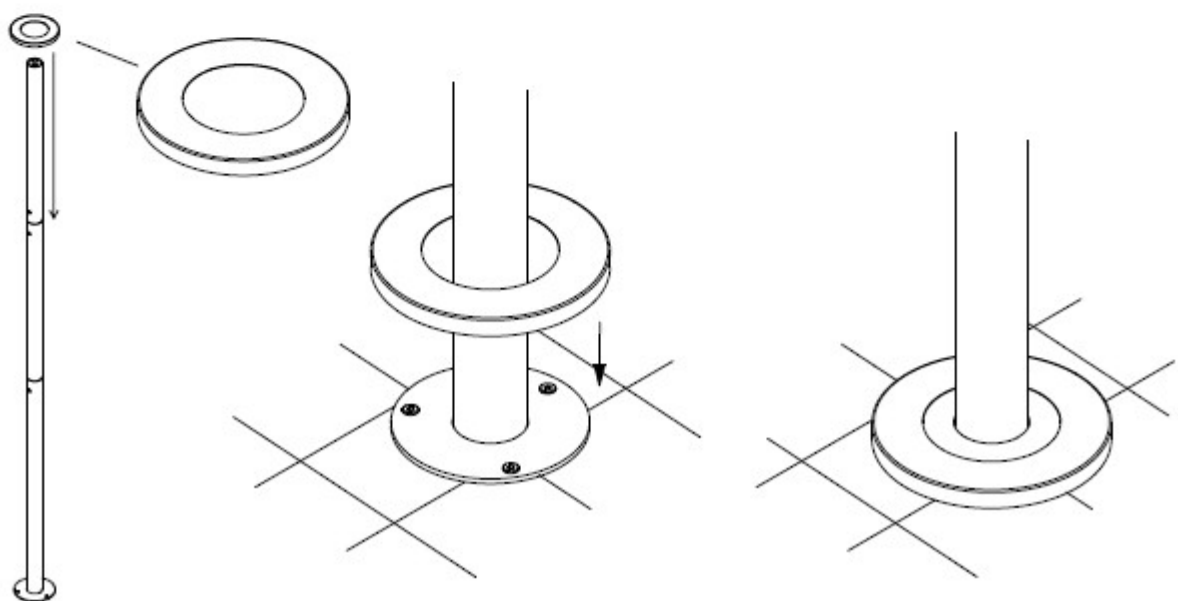


Bodenbefestigung

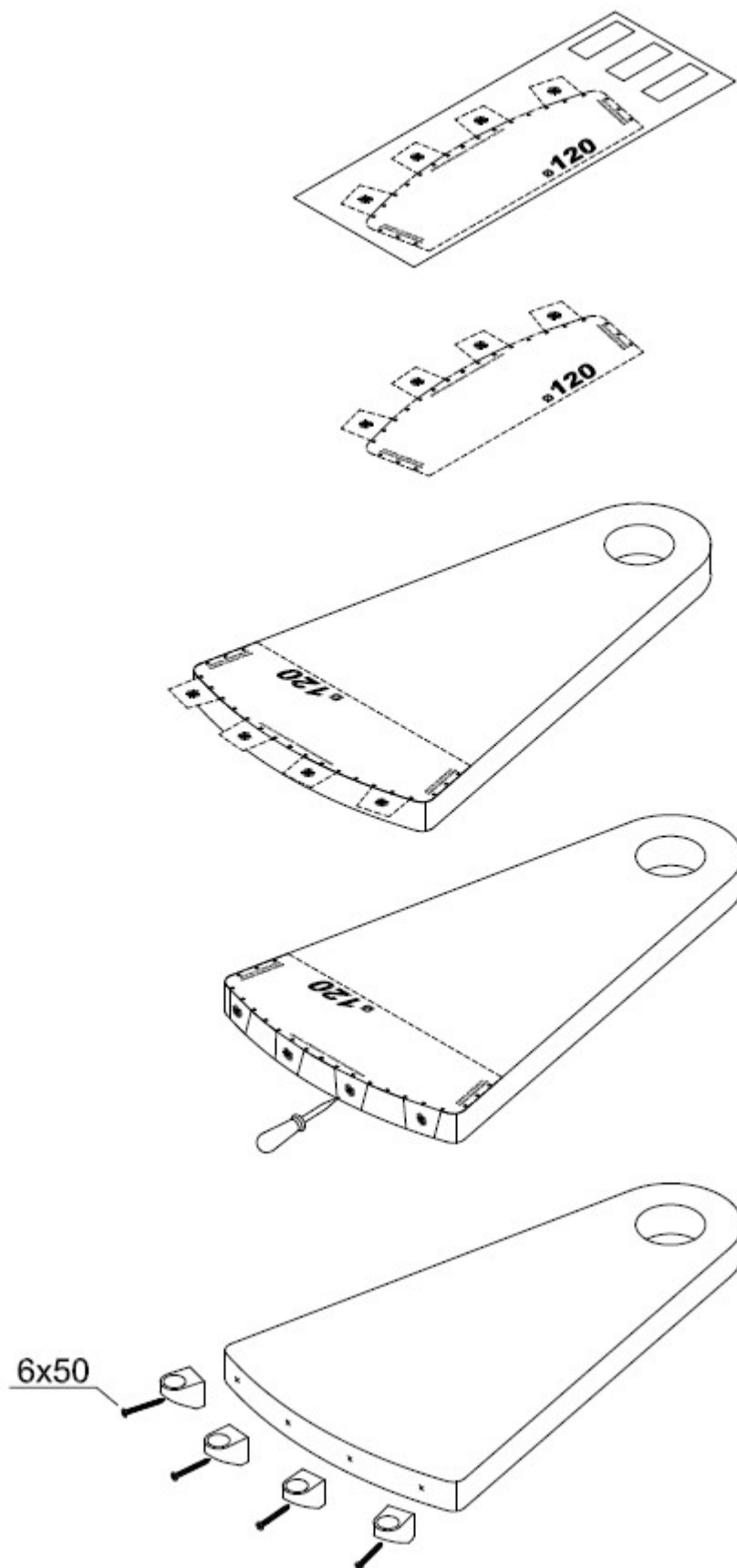


Befestigungsmaterial wird mitgeliefert,
geeignet nur für Beton/Mauerwerk

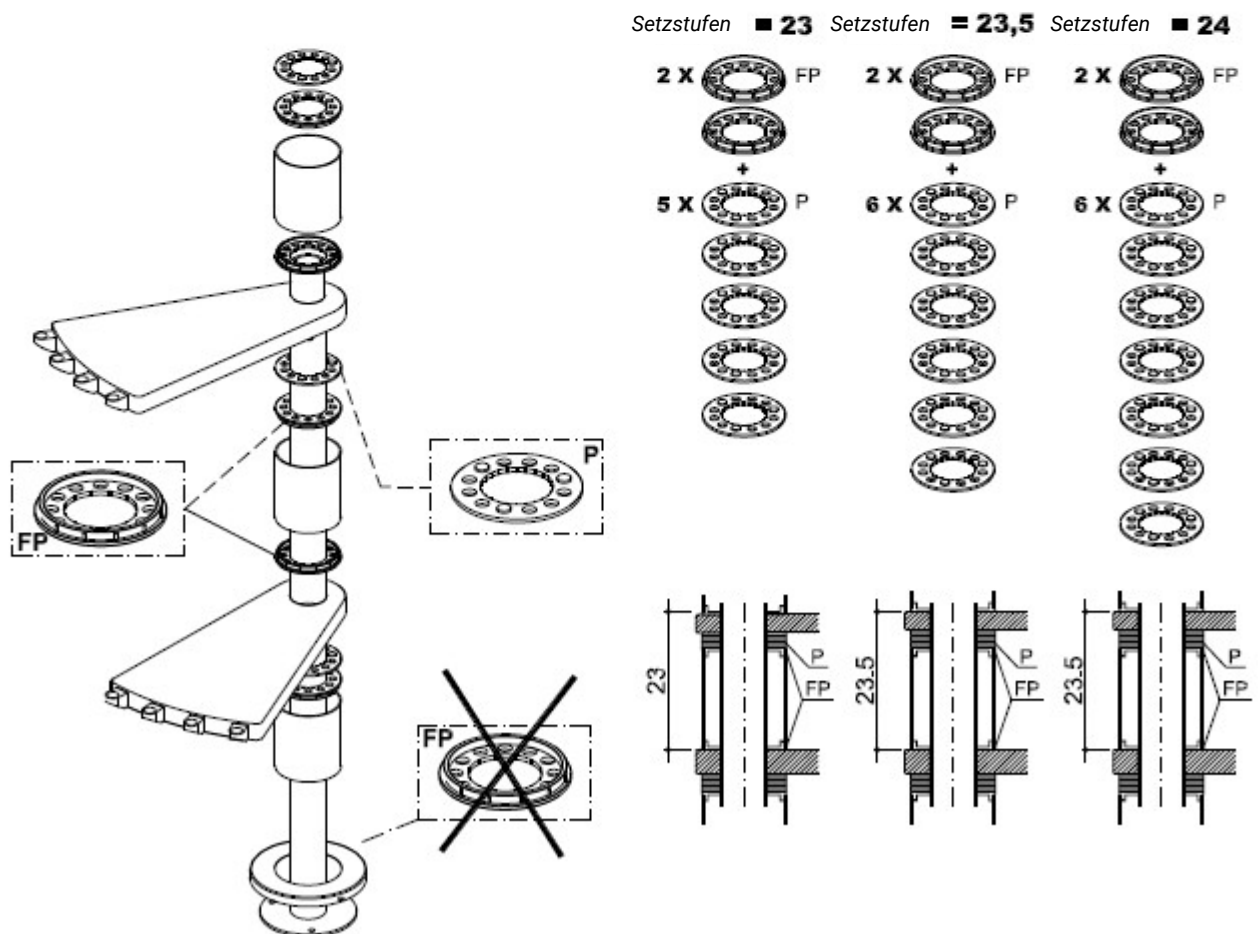
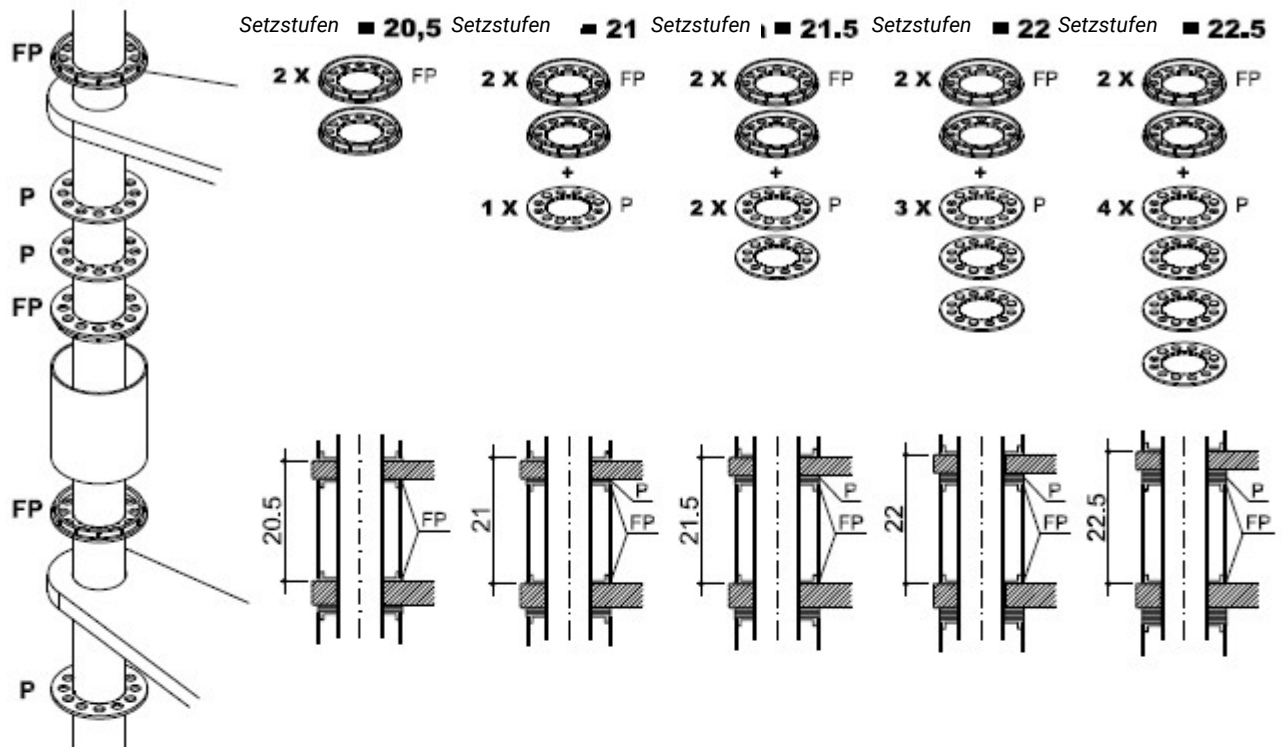
Einbau der Abdeckplatte für den Abfluss



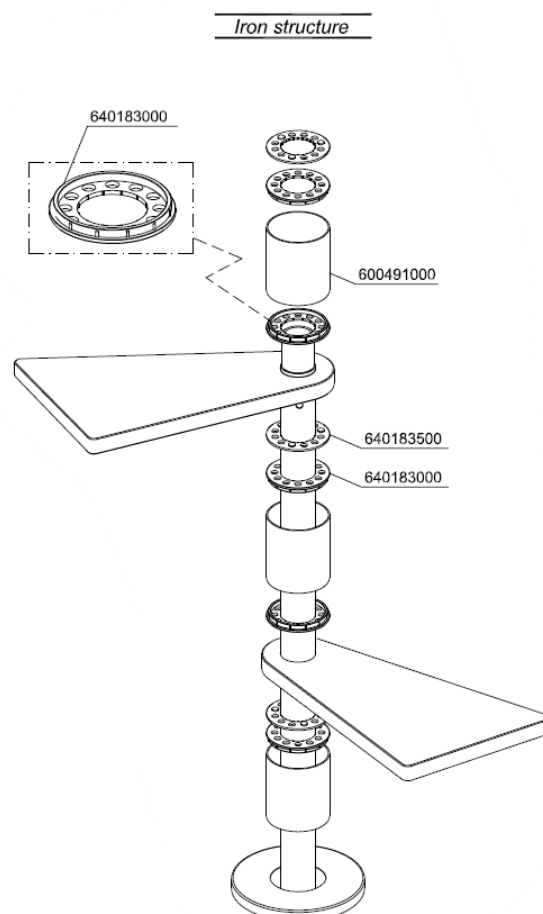
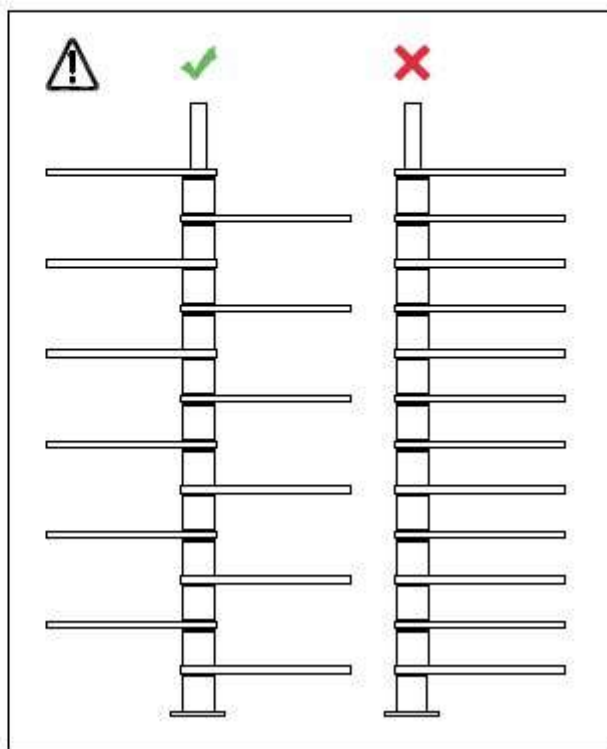
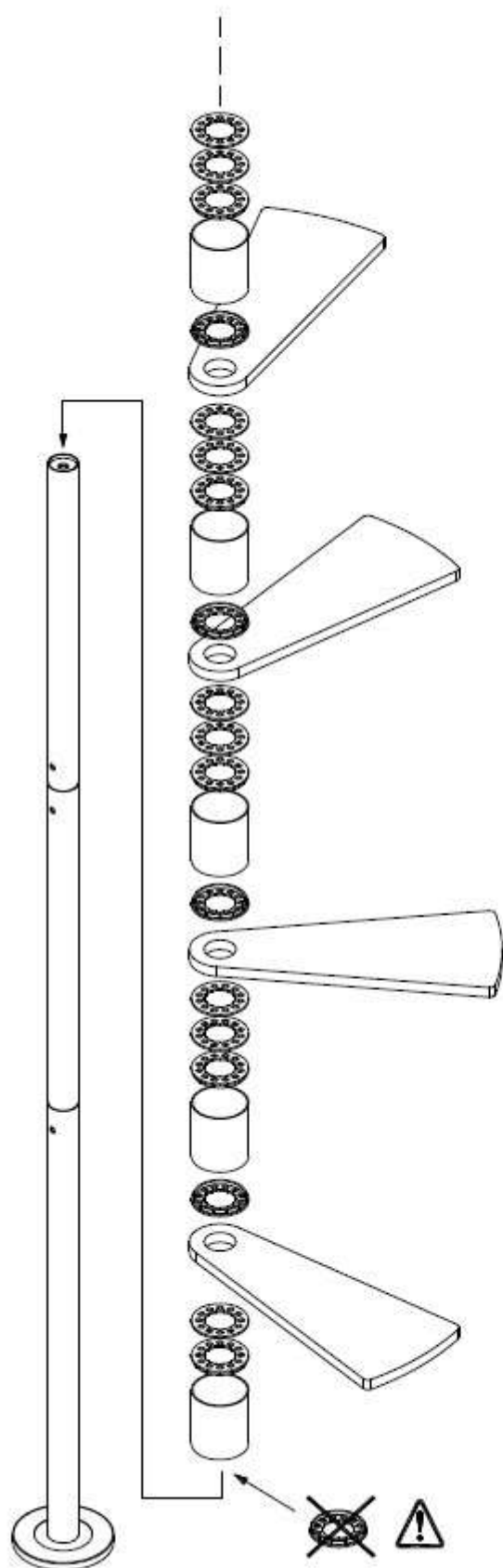
Stufen für Geländer stanzen



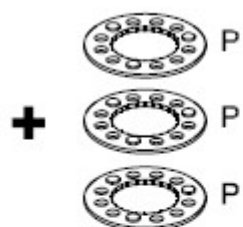
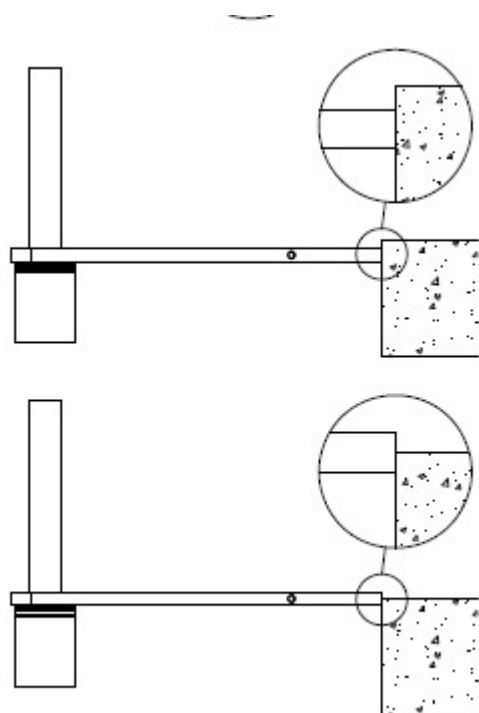
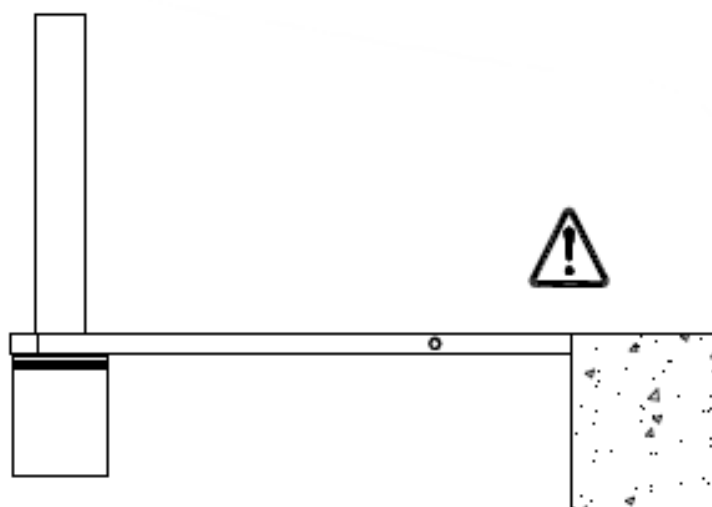
ZUSAMMENSETZUNG DER SETZSTUFEN



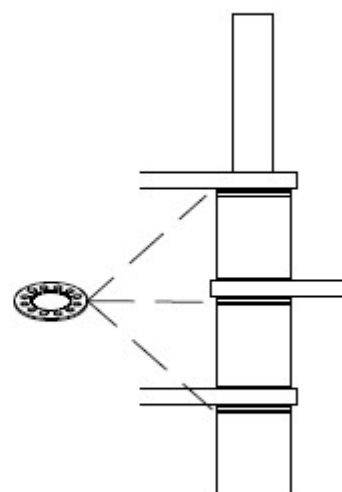
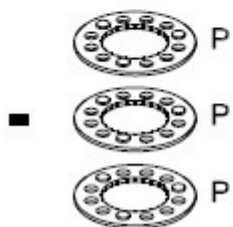
MONTAGE DER TREPPE



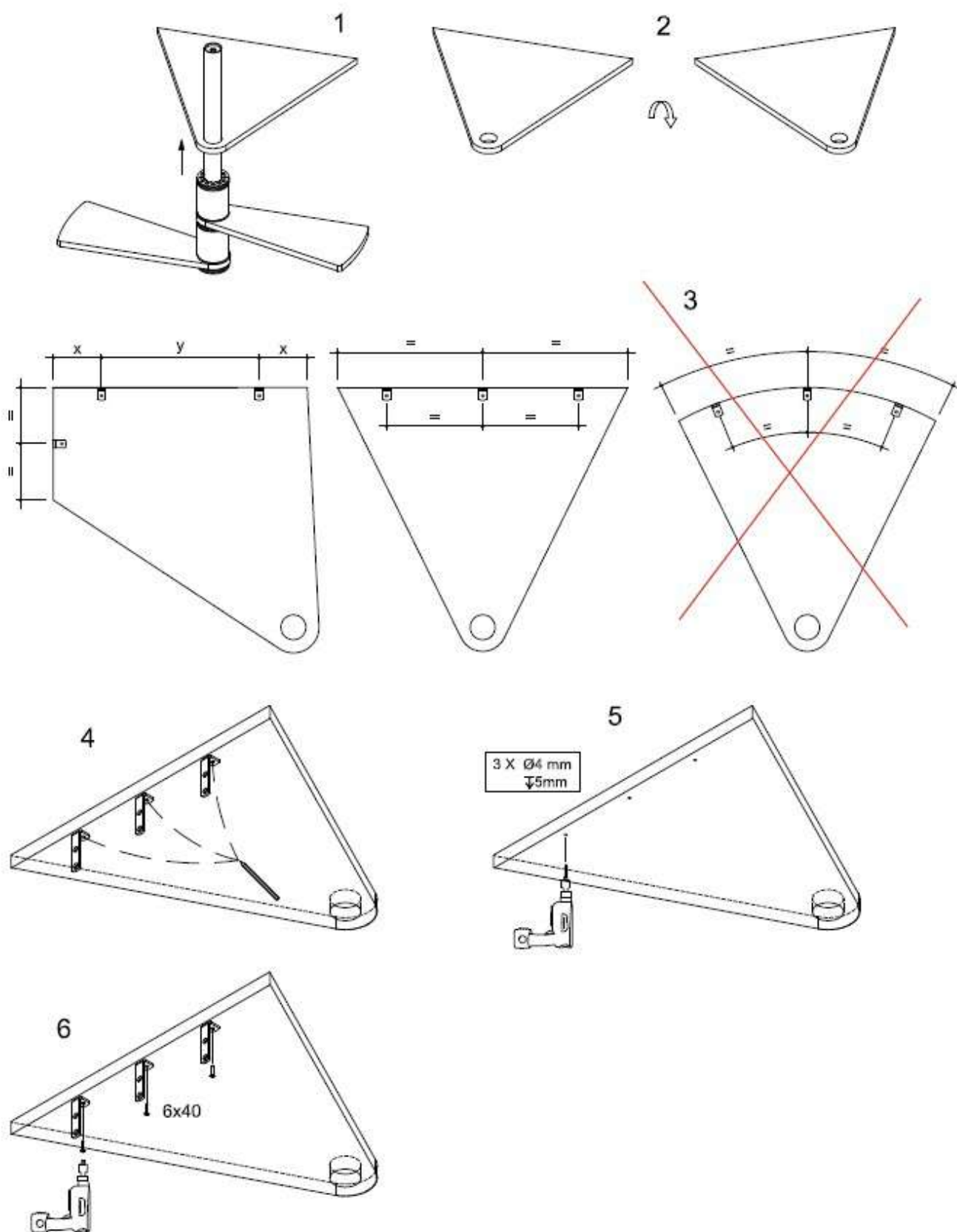
MONTAGE DES AUSGANGSPODEST



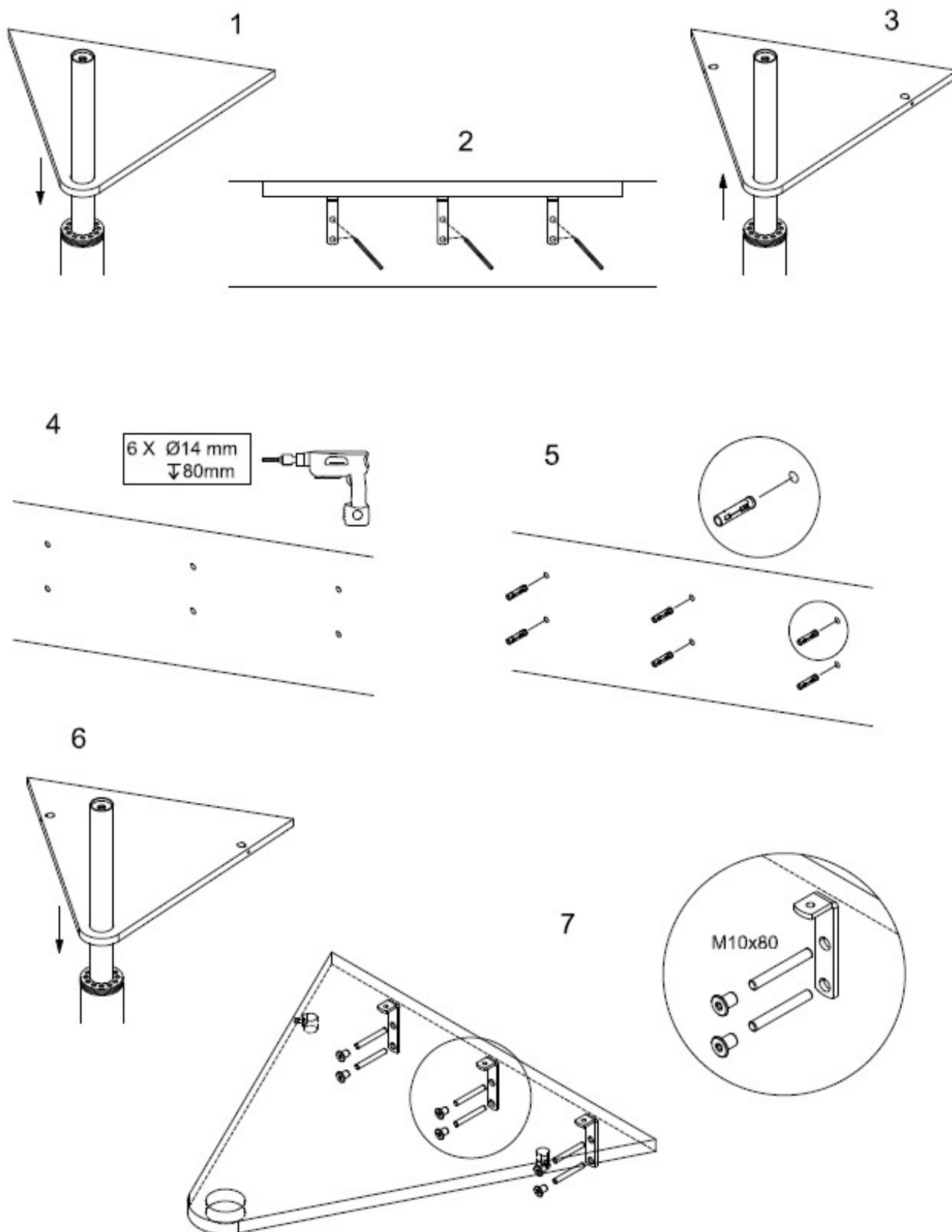
1 P = 0,5 cm



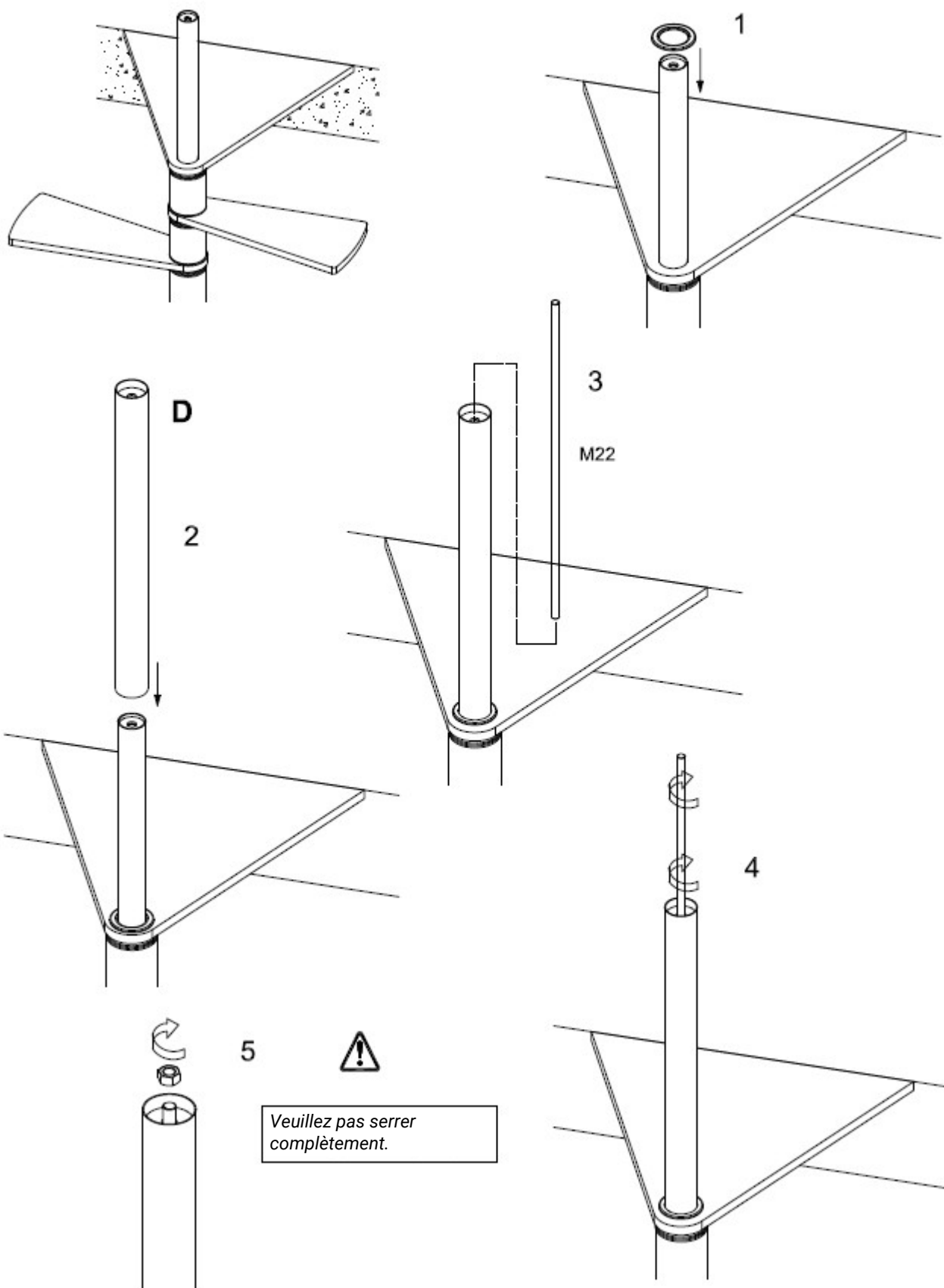
MONTAGE DES AUSGANGSPODEST



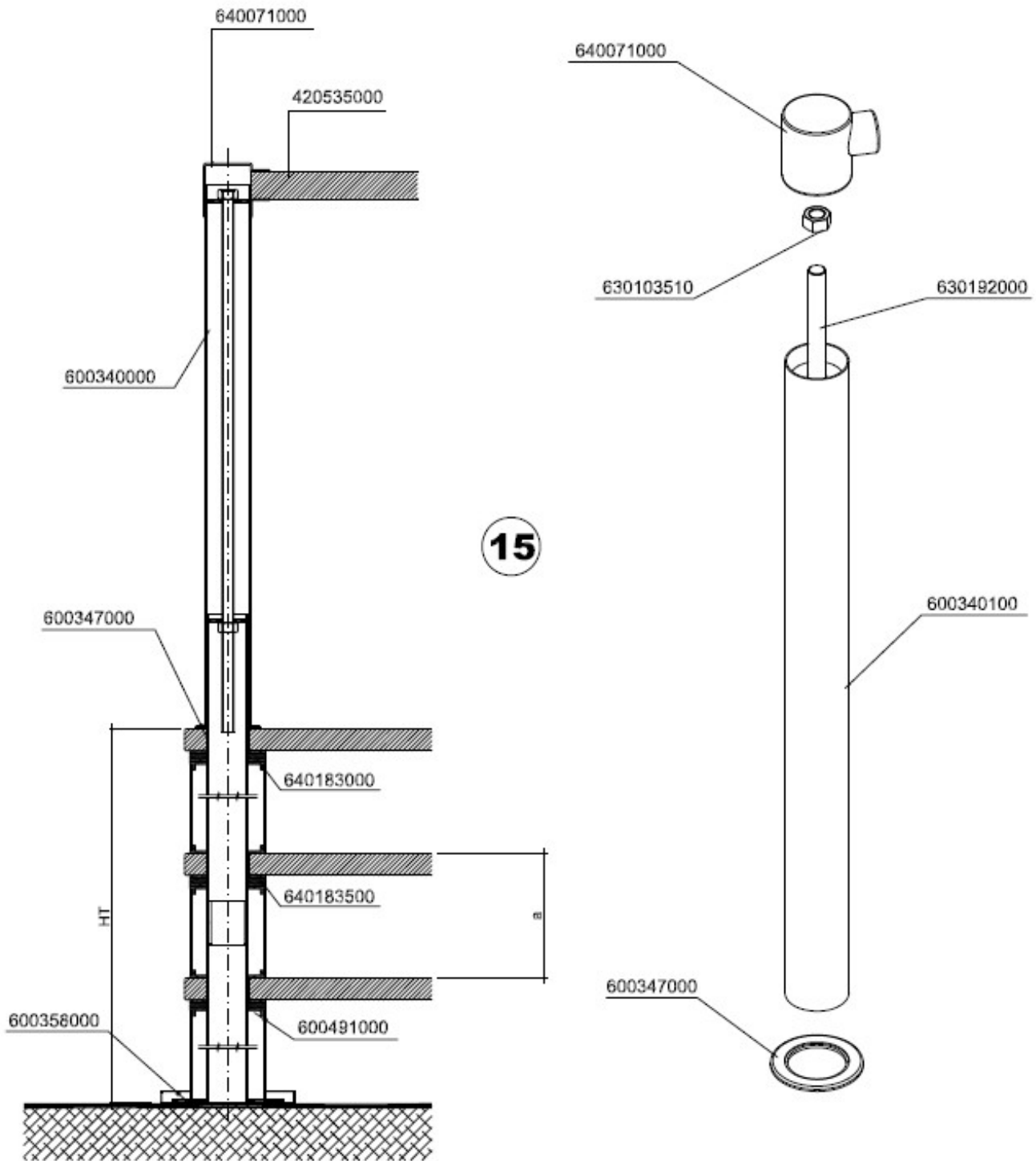
Befestigung der Treppe an der Decke



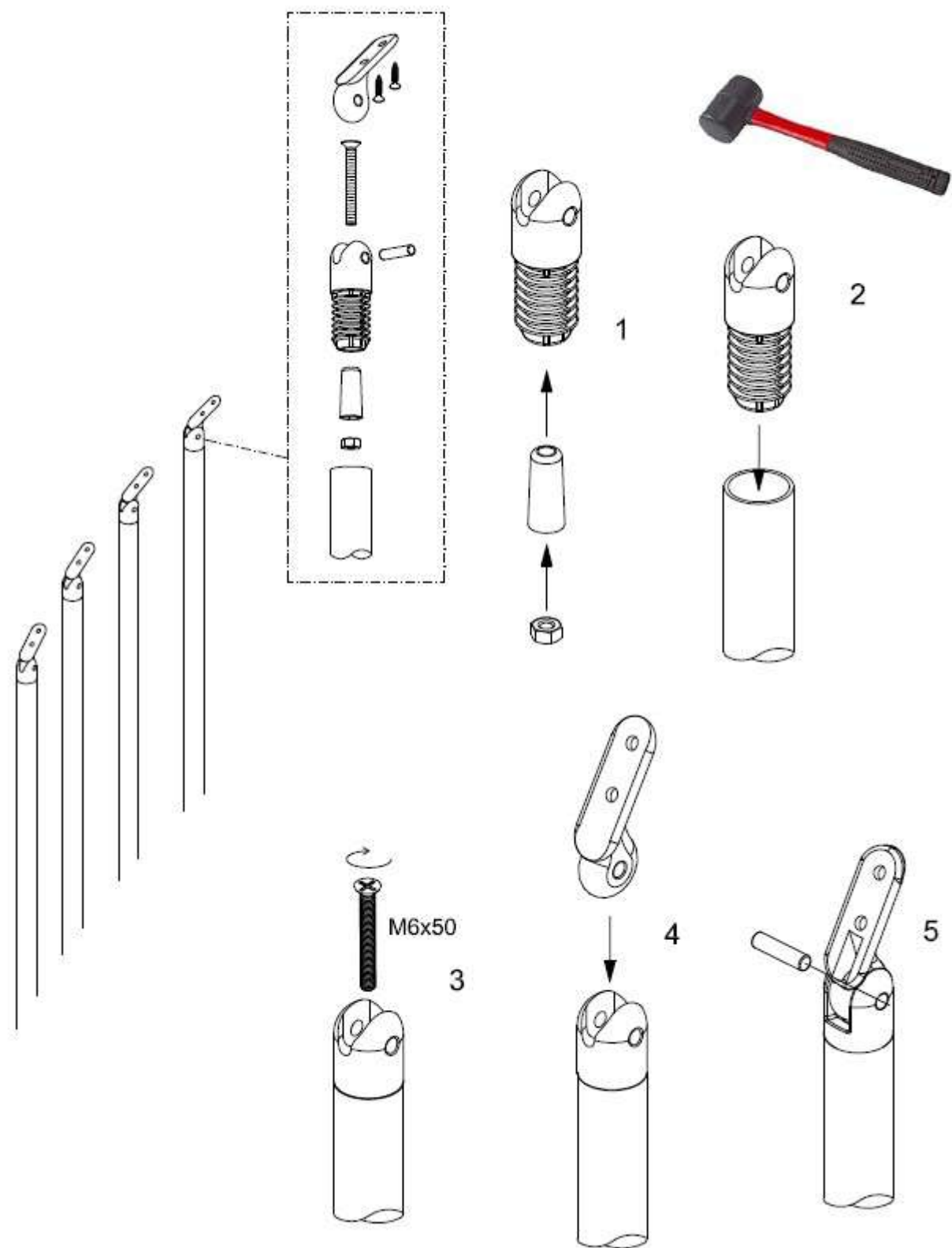
Befestigung der Treppe



Iron structure

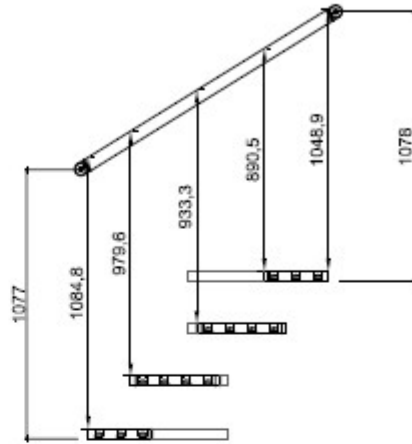
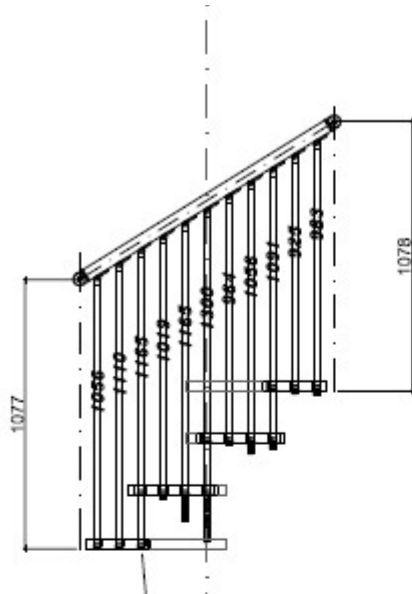


Montage der Verbindungen zwischen Säule und Geländer



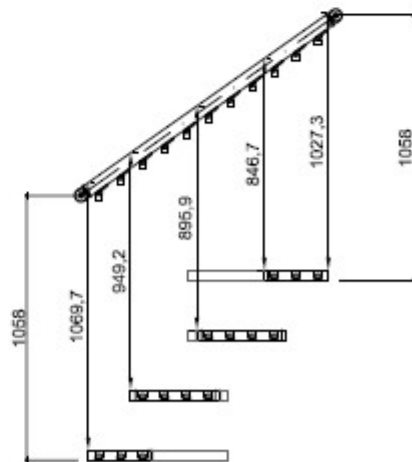
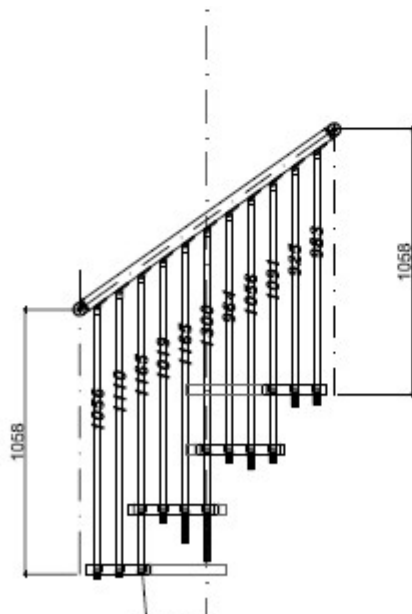
TEKLA - smart design

PROSPEKT Ø1050 -Setzstufe 210



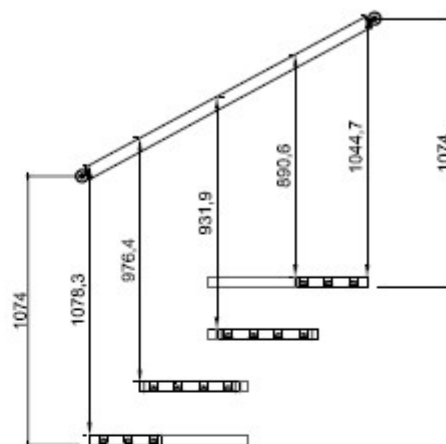
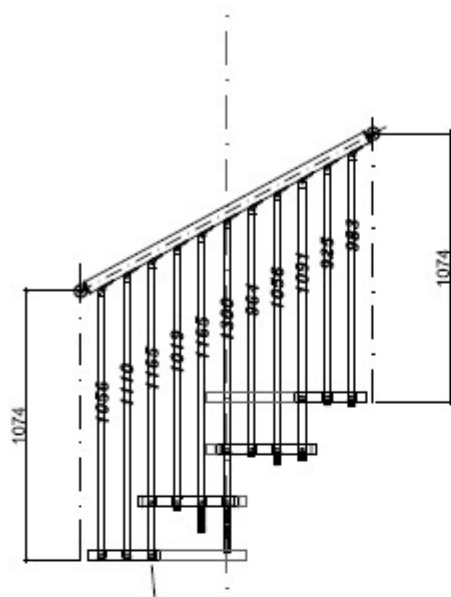
TEKLA - smart design

PROSPEKT Ø1050 -Setzstufe 240



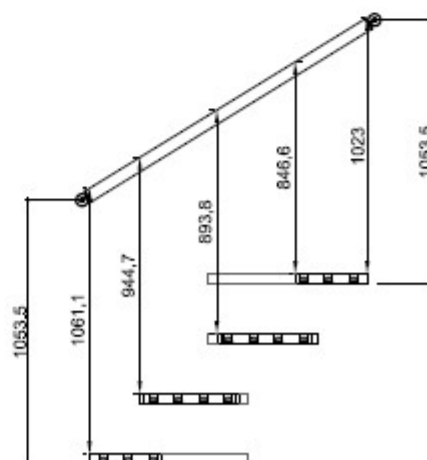
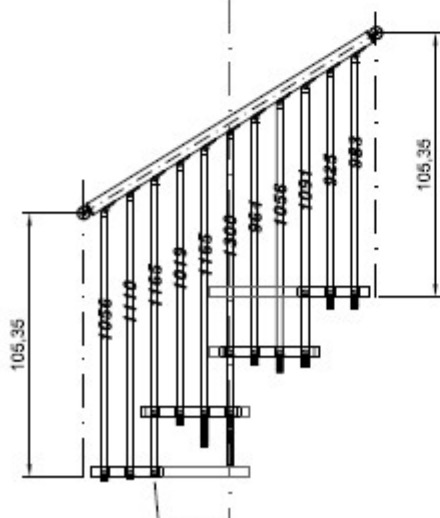
TEKLA - smart design

PROSPEKT Ø1200 –Setzstufe 210



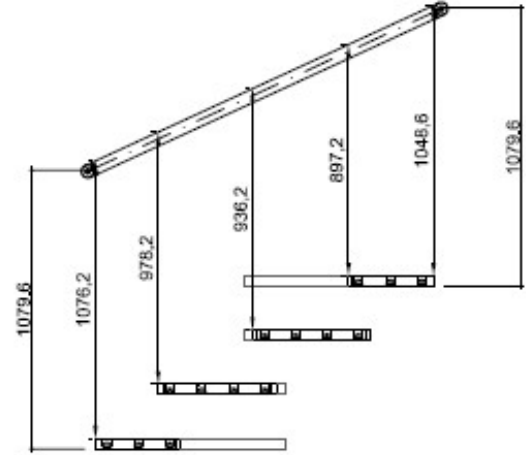
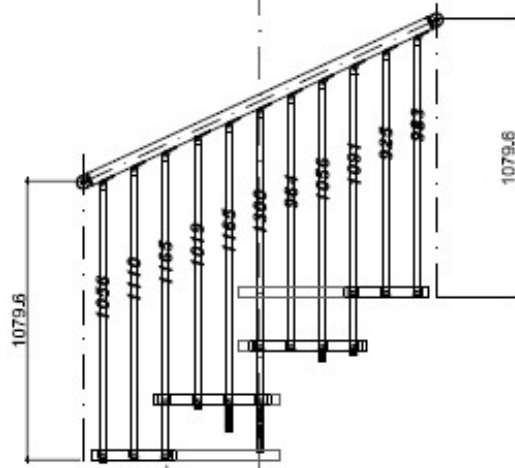
TEKLA - smart design

PROSPEKT Ø1200 –Setzstufe 240



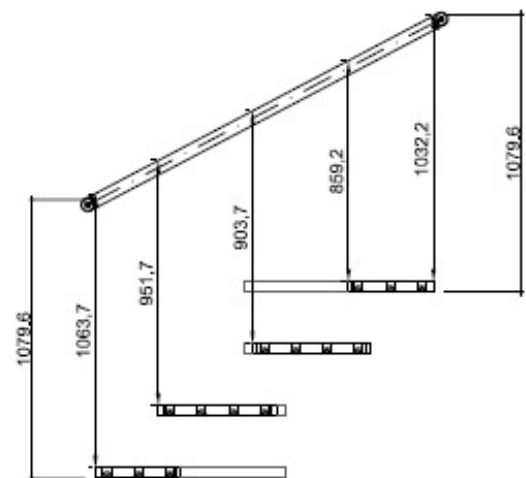
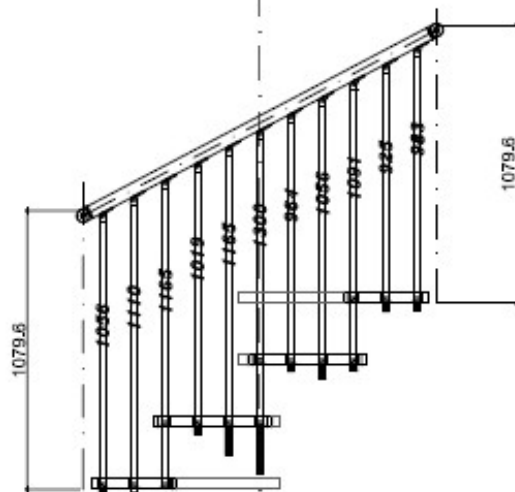
TEKLA - smart design

PROSPEKT Ø1400 – Setzstufe 210



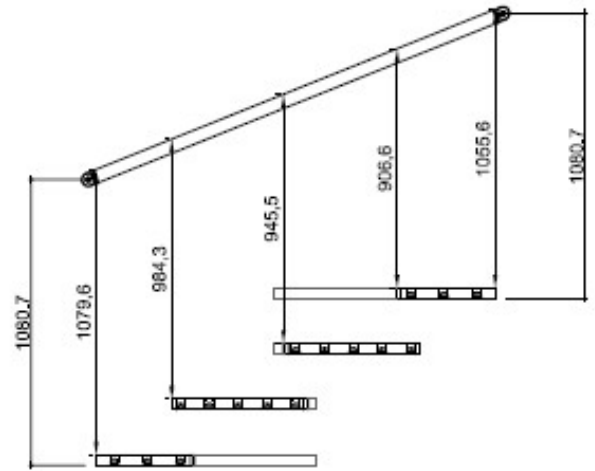
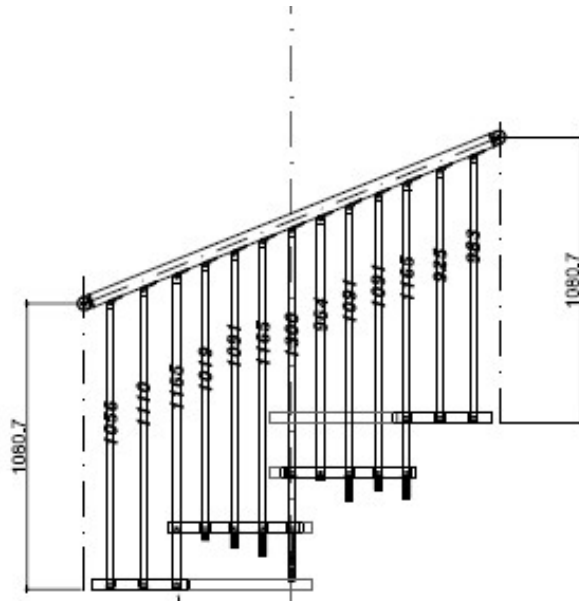
TEKLA - smart design

PROSPEKT Ø1400 – Setzstufe 240



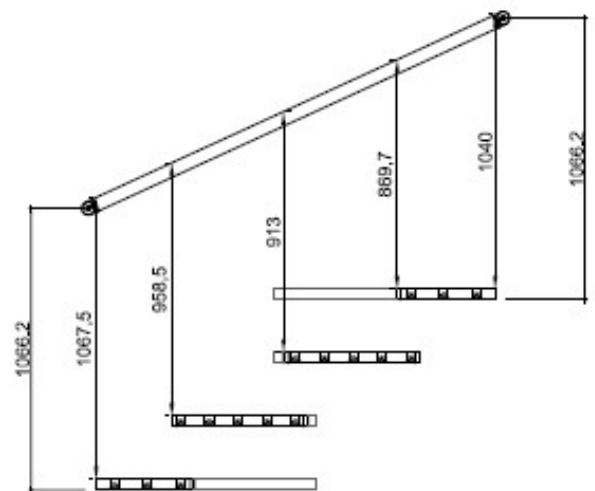
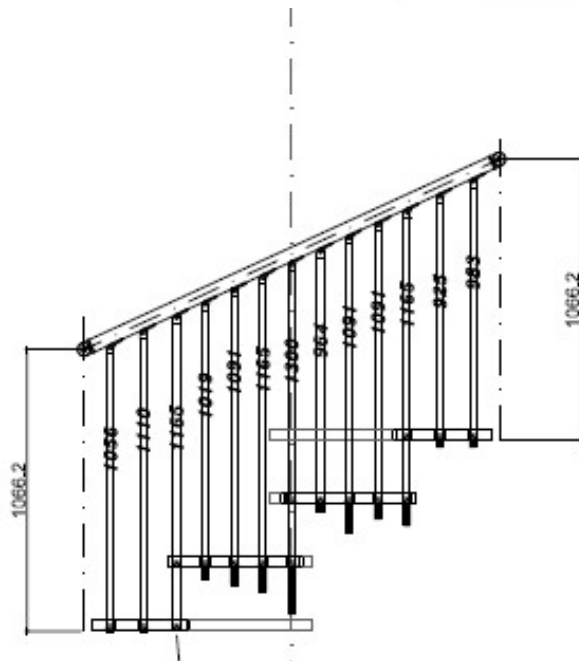
TEKLA - smart design

PROSPEKT Ø1600 – Setzstufe 210



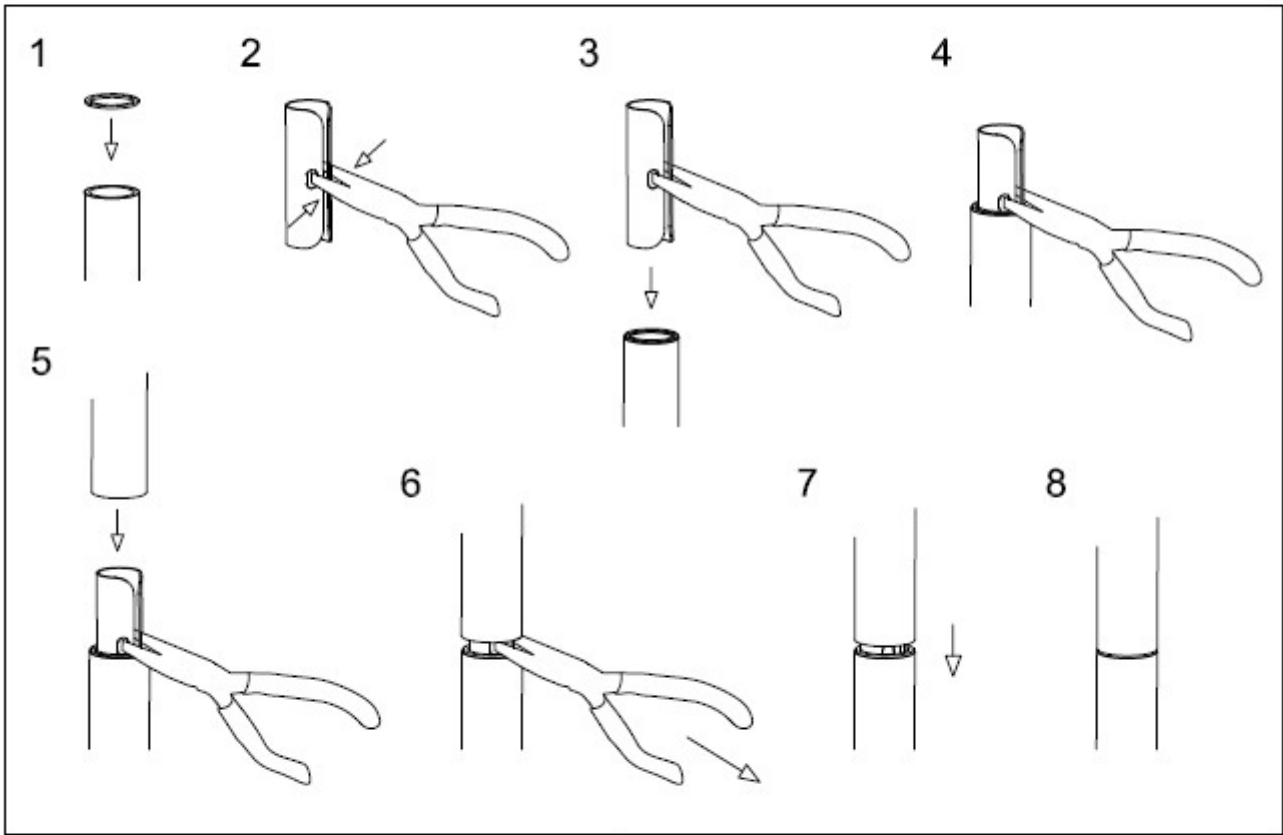
TEKLA - smart design

PROSPEKT Ø1600 – Setzstufe 240



MONTAGE DES HANDLAUFS

35



x 2

